

DOUBLETREE

BY HILTON

EDINBURGH CITY CENTRE

Where the little things mean everything.™

Welcome



*Trust us and we'll make your
next meeting a big success*

Our dedicated glass-fronted Conference Centre has its own convenient entrance and offers a variety of modern, air conditioned meeting rooms with built-in AV equipment and Wi-Fi. We cater for small business meetings as well as larger conferences for up to 200 people.

For a truly exceptional experience, choose our Penthouse. With its rooftop terrace and a floor to ceiling glass front, it provides spectacular views of Edinburgh Castle and the stunning city skyline.

Our experienced team will be with you every step of the way and cater for your every need to ensure that your event is a complete success.



Hotel Info



We put back some of what travel takes out

At DoubleTree by Hilton™ we put the human touch back into your travel experience. It all starts with the warm welcome of a chocolate chip cookie at check-in. Then the caring keeps coming with everything from the luxurious comfort of our Sweet Dreams™ by DoubleTree sleep experience, to our highly-trained team members who are dedicated to anticipating your needs, so your stay is the best it can be.

- 138 contemporary guestrooms, including 4 suites
- Sweet Dreams™ by DoubleTree sleep experience
- Deluxe rooms with castle view
- Air conditioning
- Wireless high-speed internet access in all guestrooms
- 24-hour Fitness by Precor®
- Discounted parking nearby
- In-room dining available 24 hours

Situated in the heart of the financial district, our historic A-listed building offers a fantastic location within walking distance of the Edinburgh International Conference Centre and many of Edinburgh's renowned attractions. There are a range of convenient transport links, with Haymarket train station less than 0.6 miles and Edinburgh International Airport only 7 miles from the hotel.

Earn Hilton Honors™ points every time you stay at any hotel or resort in the Hilton portfolio of brands and when you book a meeting or event with us. Spend them on free nights, upgrades, retail vouchers and more. Find out more at HiltonHonors.co.uk.

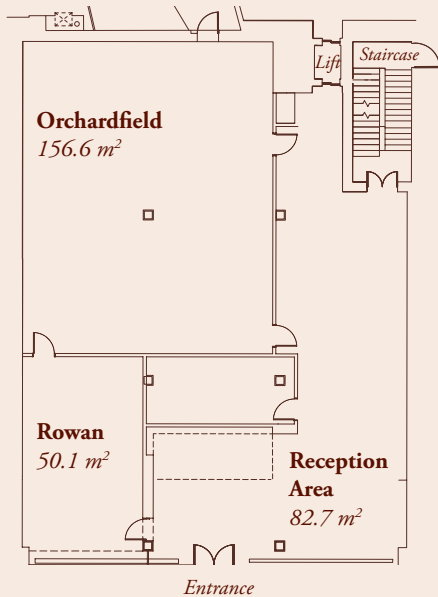


Ground Floor



Space for up to 200 delegates

GROUND FLOOR



CAPACITIES

Room	Rowan	Orchardfield	Reception
Length	9.2m	14.1m	-
Width	5.4m	11.2m	-
Ceiling Height	2.9m	2.9m	2.9m
Total m ²	50.1	156.6	82.7
Reception	32	200	150
Banquet	20	120	-
Cabaret	16	120	-
Theatre	32	200	-
Classroom	14	80	-
Boardroom	22	30	-
U Shape	18	28	-
Square	16	60	-

**Room at full capacity, without dancefloor.*

The Rowan provides a great space for small meetings such as a board room meeting for up to 22 or classroom set up for 14 whilst the Orchardfield can accommodate up to 200 theatre style and is also an ideal space for exhibitions and dinner dances. Combine the two for even more flexibility. The reception area is used for your catering requirements.

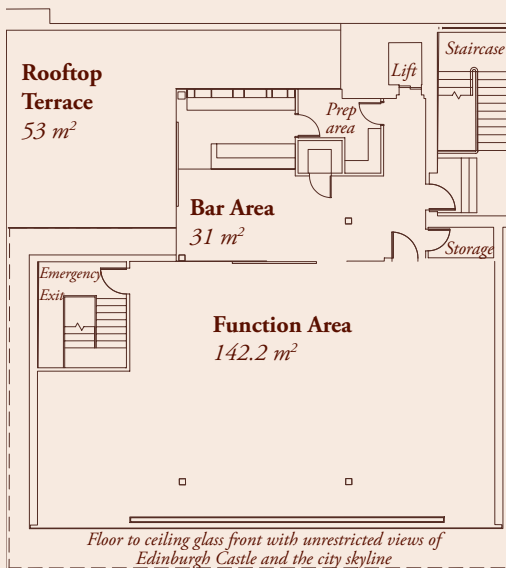


Fifth Floor



Take in the view from our Penthouse

FLOOR PLAN



CAPACITIES

Length	16.2m
Width	9.4m
Ceiling Height	2.4m
Total m ²	142.2
Reception	180*
Banquet	100
Cabaret	80
Theatre	120
Classroom	50
Boardroom	30
U Shape	32
Square	40

**Room at full capacity, does not provide seating for all guests.*

For a truly exceptional experience, choose our Penthouse. With its rooftop terrace and floor to ceiling glass front, it provides spectacular views of Edinburgh Castle and the city skyline.

Ideal for conferences, drinks receptions, entertaining, creative events, product launches, press conferences, filming, dining with a view and more. The possibilities are endless!



Meet with Purpose



Make a big impression

ON YOUR ATTENDEES AND A SMALLER ONE ON THE ENVIRONMENT.

We share your strong commitment to making meetings more productive, meaningful and memorable. Meet with Purpose promotes eco-friendly practices and offers balanced choices for your meeting participants.



MINDFUL MEETING

- Active recycling and water conservation programs
- Notepads upon request
- Energy-efficient light bulbs
- Lights, equipment switch-off for rooms not in use



MINDFUL EATING

- Balanced menus for energy-filled, productive meetings
- Supporting and celebrating local cuisine
- Seasonal produce
- Vitamin-based hydration stations



MINDFUL BEING

- Access to outdoor space and breakout areas
- Standing tables on request
- Encourage movement in meetings
- Relaxing music on request

Our Meet with Purpose mindful eating menus change daily and include a morning snack, balanced finger buffet lunch and afternoon snack, unlimited still and sparkling bottled water and three servings of tea and coffee. This is all included in our Day Delegate Rate of £40 per person. Upgrade to a BBQ lunch from May - September for a £5 supplement per person, exclusively available when hiring the Penthouse. Minimum numbers apply.



DOUBLETREE BY HILTON EDINBURGH CITY CENTRE
34 Bread Street · Edinburgh · EH3 9AF
T +44 (0)131 221 5414 · E Events@DoubleTreeEdinburghCity.co.uk
DoubleTreeEdinburghCity.co.uk